

# Acoustic Lighting

Overhead Light Infosheet



# Acoustic Overhead Lighting

“ Designed from beautiful sound-absorbing PET panels, bringing an acoustic approach closer to a space’s key noise source for improved sound absorption.

This helps to keep noise down with its natural sound dampening properties, making it achievable to acquire acoustic and lighting goals in one versatile package.

## FEATURES

- Low VOC and non-toxic
- Excellent acoustic performance
- Environmentally conscious product
- Easily retrofitted to existing spaces
- A wide range of light series and colours
- Lightweight and easy on site handling
- Improving internal environment by lowering reverberation and background noise
- Acts as a lighting element feature to any space
- Customization available



**DECOR**  
ATIVE



**FLAME**  
RETARDANT



**ACOUS**  
TICAL



**ECO**  
FRIENDLY



**VOC**  
FREE



**REC**  
CYCLED



**HIGH**  
IMPACT  
RESISTANCE



**THERMAL**  
INSULATION



# Acoustic Lighting

## Product Specifications

### Specifications

Product Name: Acoustic Overhead Lights

Composition: 100% Polyester  
(min50% +/-) recycled PET fiber.  
Made of plastic bottle.

\*Moulded light shape are made from 100% polyester and approximately 50% of which is recycled water/soda bottle

\*Standard lighting and wiring are included

Dimensions: \*refer to lighting specification for type specific dimensions

### Lamp Specifications

Category: LED	CCT: 2700K, 3000K	Mounting: Suspended from ceiling
Wattage (W): 12W	Net Lumen: 950lm	Hanging Kit: Supplied cable

### Flame Spread and Smoke Development Test Data

ASTM E84 (Class A or Class 1)  
EN ISO 13501-1 (b-sl, d0)  
EN ISO 1195-2 compliant

### Thermal Resistance

0.219(m<sup>2</sup>-K)/W;  
EN 12667:2001

### Thermal Conductivity

0.041 W/(mK-);  
EN 12667:2001

### Environmental

No VOCs. Green Label Certified, LEEDS criteria  
Approximately 50% of which is recycled water/soda bottle.  
Off-cuts and manufacturing waste are re-used or recycled wherever possible. Manufactured without use of formaldehydes, adhesives or other bonding agents.

# ACOUSTIC LIGHTING COLLECTION

## Kugo Lights

### Inverse Kugo



### Reverse Kugo



### Kugo Dimension:

#### Mini Kugo

Dimension:

300mm x Ø400mm

#### Maxi Kugo

Dimension:

360mm x Ø835mm

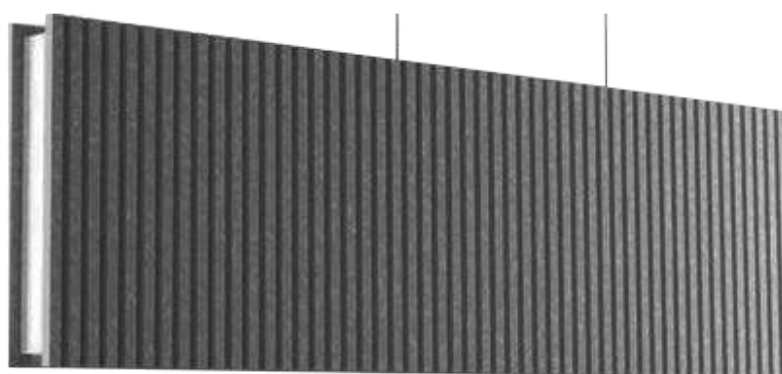
# ACOUSTIC LIGHTING COLLECTION

## Linear Lights

### Linear Plain



### Linear Rib



### Linear Dimension:

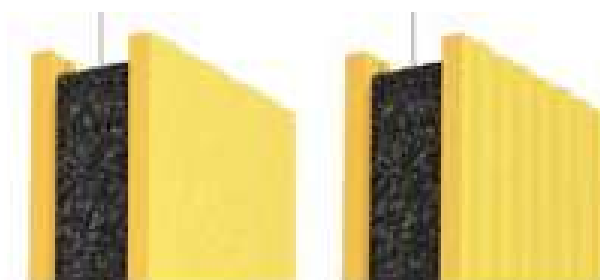
\*customizable

L600mm x H200mm

L600mm x H300mm

L1200mm x H600mm

### Side view



# ACOUSTIC LIGHTING COLLECTION

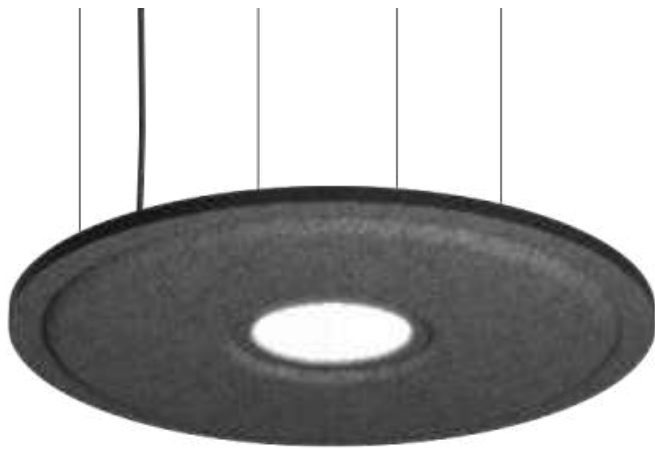
## Donut Lights

### Donut Plain

Dimension:

Inner dia: Ø320mm

Outer dia: Ø1150mm



### Donut Carved

Dimension:

Inner dia: Ø520mm

Outer dia: Ø1150mm



# ACOUSTIC LIGHTING COLLECTION

## Dome Lights



**Mini Dome**  
Dimension:  
310mm x Ø510mm

**Maxi Dome**  
Dimension:  
360mm x Ø750mm



**Inside view**

# ACOUSTIC LIGHTING COLLECTION

## Bell Lights



### Single Bell

Dimension:

820mm x 820mm x 410mm



### Double Bell

Dimension:

1210mm x 820mm x 410mm



### Triple Bell

Dimension:

1600mm x 820mm x 410mm

# ACOUSTIC LIGHTING COLLECTION

## Bella Lights



### Single Bella

Dimension:

836mm x 836mm x 442mm



### Double Bella

Dimension:

1336mm x 836mm x 442mm



### Triple Bella

Dimension:

1836mm x 836mm x 442mm

# ACOUSTIC LIGHTING COLLECTION

## Variation Lights



**Geneva**  
Dimension:  
L350mm x H220mm



**Aladdin**  
Dimension:  
L655mm x H280mm



**Pumpkin**  
Dimension:  
L490mm x H380mm

# ACOUSTIC LIGHTING COLLECTION

## Variation Lights



**Flora**

Dimension:

L430mm x H300mm



**Rocket**

Dimension:

L400mm x H400mm



**Weave**

Dimension:

L600mm x H300mm

# ACOUSTIC LIGHTING COLLECTION

## Variation Lights



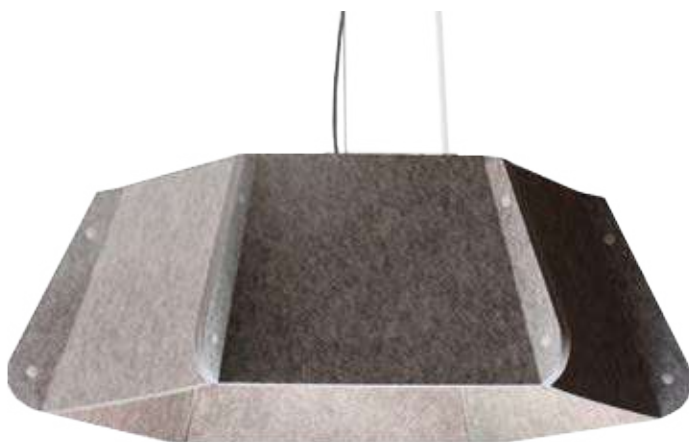
### Geneva

Dimension:

L430mm x H300mm

Upper dia: Ø300mm

Lower dia: Ø600mm



### Levee

Dimension:

L580mm x H380mm



### Recto

Dimension:

L1000mm x H600mm

# ACOUSTIC LIGHTING COLLECTION

## Felt Lights



**Vesse**  
Dimension:  
L700mm x H400mm  
dia:Ø538mm



**Keros**  
Dimension:  
L650mm x H630mm  
dia:Ø300mm

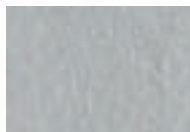


**Mini Linnea**  
Dimension:  
Ø1000mm x 100mm

**Maxi Linnea**  
Dimension:  
Ø1500mm x 100mm

# Colour Collection

## Standard Selection



T01 WHITE



T03 SILVER GREY



T02 WATER GREY



T04 MOON GREY



A05 ASH



T17 AFRICAN GREY



T19 DARK GREY



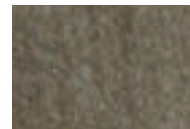
T18 SESAME BLACK



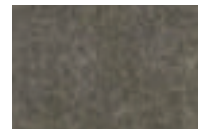
T20 JET BLACK



T25 BEIGE

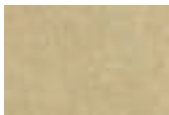


T26 MOCHA



YH639 SPESH GREY

## Selection for MOQ.



T33 CREAM



T28 DARK BROWN



T27 LIGHT BROWN



YH602 BUMBLE YELLOW



T06 YELLOW



T07 ORANGE



T35 GOLD BRONZE



CBH87 SALMON



T31 KISS RED



T32 DARK RED



A32 CHERRY



T29 ROSE RED



T30 PURPLE



A08 DENIM



T36 DEEP BLUE



T23 SKY BLUE



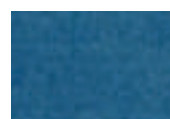
T22 BLUE



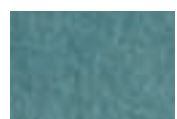
T21 LIGHT BLUE



T24 DARK BLUE



T14 BLUE CAMEL



YH641 PREEN BLUE



T37 TEAL



T13 GREEN CAMEL



YH19 AQUA



YH640 WANE GREEN



T11 GRASS GREEN



T09 FRUIT GREEN



A48 LIME



T12 DARK GREEN



A47 AVOCADO



YH614 NEON GREEN

Actual colour may vary, please request for updated colour samples of **estic** panels. Contact our design team for custom applications or visit our website at [www.alfadb.net](http://www.alfadb.net).





# Inverse Kugo

Acoustic Lighting Range



# Linear Rib

Acoustic Lighting Range



**Keros**  
Acoustic Lighting Range



# Variation Lights

Acoustic Lighting Range



**Donut**  
Acoustic Lighting Range

# Get in touch with us



**YOUTUBE**  
ALFA dB



**FACEBOOK**  
[www.facebook.com/alfadb.net](http://www.facebook.com/alfadb.net)



**INSTAGRAM**  
alfadb.my

## Website

[www.alfadb.net](http://www.alfadb.net)

## Email address

[info@alfadb.net](mailto:info@alfadb.net)

## Contact number

+60 13 329 9960  
+60 10 385 9960  
+603 5103 2730 (Headquarter)

### Alfa Soundscape & Design Sdn Bhd Main Office

No 32A-1, Jalan Putra Mahkota 7/4B, Putra Heights,  
47650, Subang Jaya Selangor, Malaysia

### Alfa Soundscape Malaysia Design Studio

No 25-G, Jalan Putra Mahkota 7/4A, Putra Heights,  
47650, Subang Jaya Selangor, Malaysia

### Alfa Soundscape Sweden Sound Lab

Braxengatan 5, 222  
71, Lund Sweden

