

MICROPERF WOOD PET

MICROPERFORATED
ACOUSTIC PANEL
INFOSHEET





About

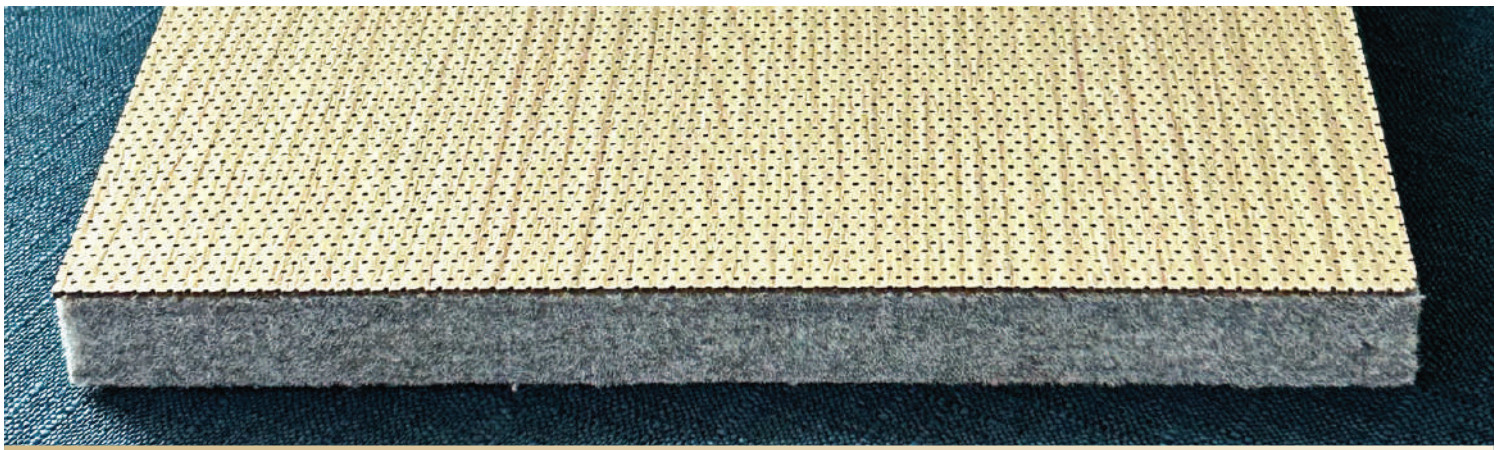
MicroPerf Wood PET

Microperforated Wood PET Panels bring together modern design and advanced acoustic performance in one elegant solution. Featuring a sleek wooden surface with microperforations, paired with a sustainable PET acoustic base, these panels are designed to absorb sound effectively while adding a refined, contemporary touch to any space.

Unlike standard grooved wooden panels, the seamless design of Microperforated Wood PET ensures a clean, stylish finish without visible perforations. This makes them perfect for creating quiet, comfortable environments without compromising on aesthetics.

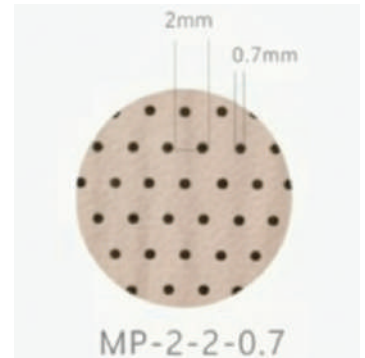
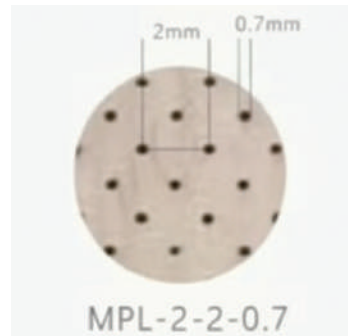
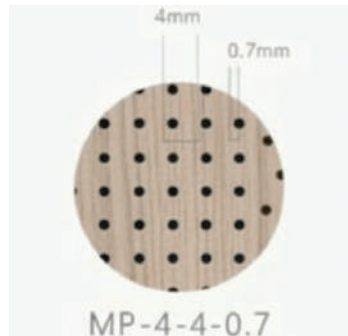
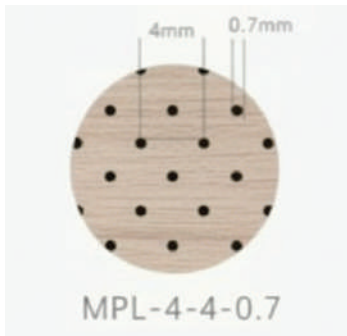
Easy to install on walls or ceilings, they are lightweight, durable, and versatile — ideal for offices, hospitality, retail, or even home interiors. With their blend of sustainability, acoustic efficiency, and modern styling, Microperforated Wood PET panels are the perfect choice for spaces that demand both beauty and performance.





Product Specifications

Types & Details



COMPOSITION: Microperforated Veneer Surface with 100% Polyester (min50% +/-) recycled PET fiber

DIMENSION: 600mm x 1200mm

MICROPERFORATION HOLE DIAMETER: 0.7mm

CORE THICKNESS (PET): 12mm thk (customizable)

FINISHING: • High Pressure Laminate (HPL)

• Varnished Wood Veneer

NOISE REDUCTION COEFFICIENT: 0.8–1.1, SGS Test for Polyester panel

FIRE RETARDANT: ASTM Class A

ENVIRONMENTAL GRADE: E0

INSTALLATION: Glue, Wood frame, Gun nail



Technical Data

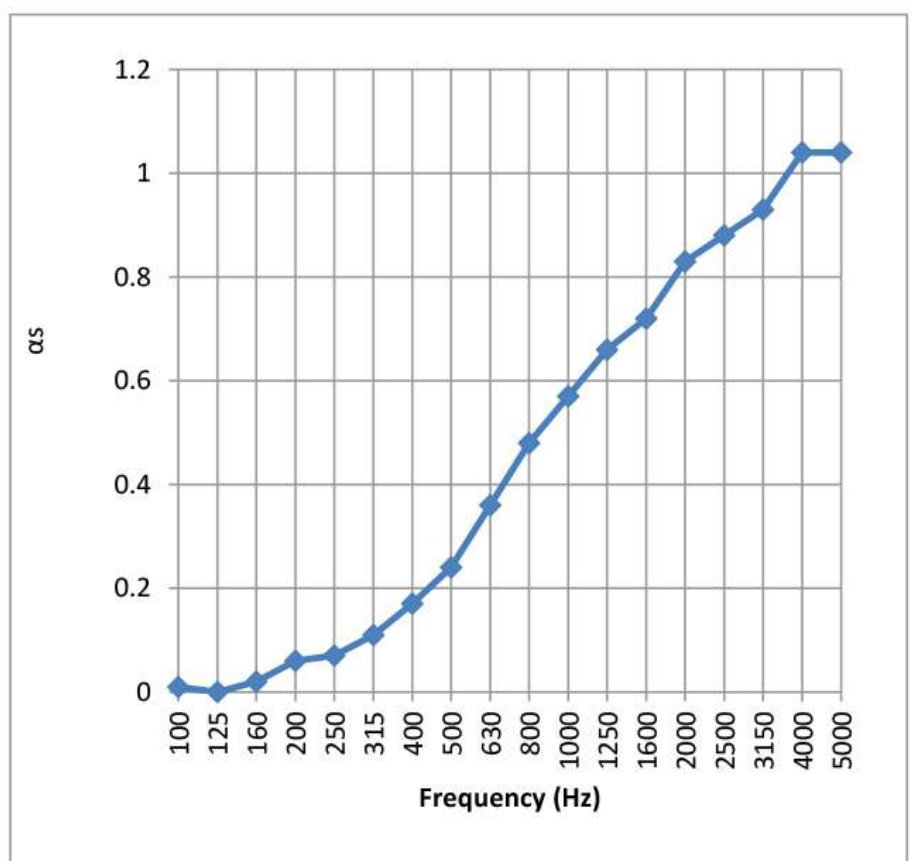
Acoustic Performance

Volume of the reverberation room	Vs, m ³	240	Installation Type ¹ :	Type-A
Room temperature	t1, °C	17	t2, °C	17
Relative humidity of test rooms	H1,%	75	H2,%	75

Sample description:

Sample size (width*length),mm	2440*1220	Thickness, mm	12.0
Edge treatment	/	Mass, kg/m ²	2.30
Test Area, m ²	10.8		

Frequency (Hz)	α_s
100	0.01
125	0.00
160	0.02
200	0.06
250	0.07
315	0.11
400	0.17
500	0.24
630	0.36
800	0.48
1000	0.57
1250	0.66
1600	0.72
2000	0.83
2500	0.88
3150	0.93
4000	1.04
5000	1.04
NRC	0.45
SAA	0.43



Note: 1. Installation type was defined in accordance with ASTM E795-16.

Material Finishes

Woodgrain Swatch Range



2140S
EV Washed Oak



438S
EV Oak



2922C
EV Walnut



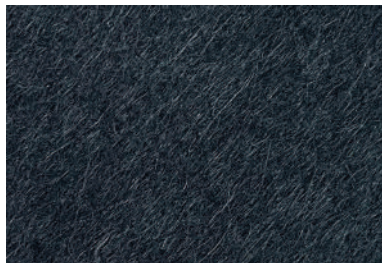
6024Q
EV Wenge

Base Colour

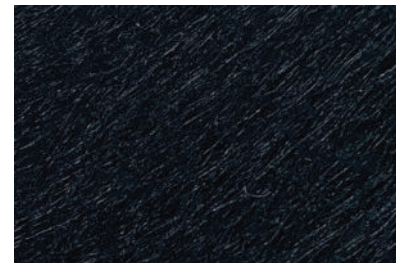
PET Swatch Range



T03
Silver Grey



T19
Dark Grey



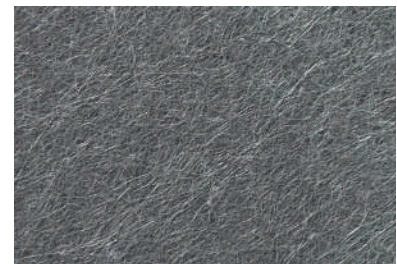
T20
Jet Black



T25
Beige



T26
Mocha



YH639
Spesh Grey

NOTE:

Due to the special characteristics of natural wood veneer, color tone and texture may vary. Images are only approximate. | Other woodgrain swatches are available upon enquiry with your account provider.

Get in touch with us



YOUTUBE
ALFA dB



FACEBOOK
www.facebook.com/alfadb.net



INSTAGRAM
alfadb.my

Website

www.alfadb.net

Email address

info@alfadb.net

Contact number

+60 13 329 9960

+60 10 385 9960

+603 5103 2730 (Headquarter)

Alfa Soundscape & Design Sdn Bhd Main Office

No 32A-1, Jalan Putra Mahkota 7/4B, Putra Heights,
47650, Subang Jaya Selangor, Malaysia

Alfa Soundscape Malaysia Design Studio

No 25-G, Jalan Putra Mahkota 7/4A, Putra Heights,
47650, Subang Jaya Selangor, Malaysia

Alfa Soundscape Sweden Sound Lab

Braxengatan 5, 222
71, Lund Sweden



SWEDEN • MALAYSIA • SINGAPORE • PHILIPPINES • VIETNAM