

# 24MM

## Acoustic Panel Infosheet



# 24MM Acoustic Panels

“ The 24mm panel enhances both acoustic control and visual impact. Its thicker 100% polyester build offers richer absorption and more design freedom. With greater depth and presence, it elevates any space.

## Product Specifications and Technical Data

### Specifications

Composition: 100% Polyester  
(min50% +/-)  
recycled PET fiber.  
Made of plastic bottle.

Dimensions: 1200x2400x24mm

Thickness: 24mm      Density: 4kg/m<sup>2</sup>

### Flame Spread and Smoke Development Test Data

ASTM E84 (Class A or Class 1)  
EN ISO 13501-1 (b-s1, d0)  
EN ISO 1195-2 compliant

### Thermal Resistance

0.219(m<sup>2</sup>-K)/W;  
EN 12667:2001

### Thermal Conductivity

0.041 W/(mK-);  
EN 12667:2001

### Environmental

No VOCs and Green Label Certified, meeting LEED criteria. Made with roughly 50% recycled PET from water bottles, with off-cuts and production waste reused or recycled wherever possible. Manufactured without formaldehydes, adhesives, or other bonding agents.



# Technical Data

## Acoustic Performance

### Testing Standards

ISO 354:2003	Acoustics — Measurement of sound absorption in a reverberation room
ISO 11654:1997	Acoustics — Sound absorbers for use in buildings — Rating of sound absorption
ISO 20189:2018	Acoustics — Screens, furniture and single objects intended for interior use — Rating of sound absorption and sound reduction of elements based on laboratory measurements
ASTM C423-17	Standard Test Method for Sound Absorption and Sound Absorption Coefficients by the Reverberation Room Method
ASTM E795-16	Standard Practices for Mounting Test Specimens During Sound Absorption Tests

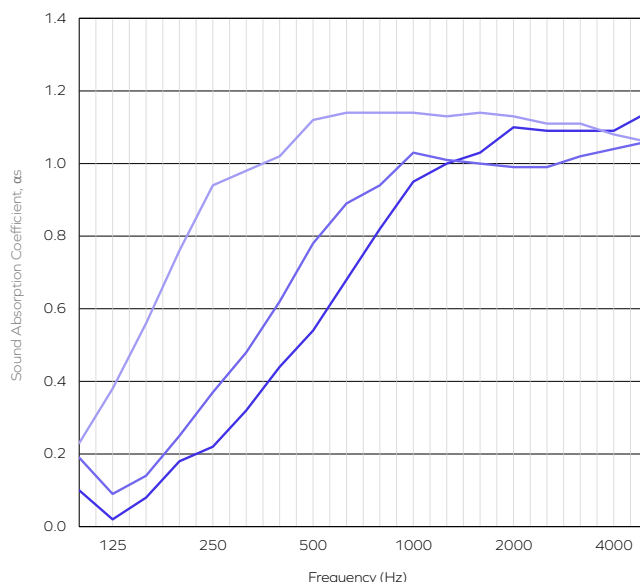
### Acoustic Test Results

	$\alpha_w$	SAA	NRC
Estic 24mm (no air gap)	0.55 (MH)	0.70	0.70
Estic 24mm (50mm air gap)	0.65 (MH)	0.78	0.80
Estic 24mm (50mm insulation)	1.00	1.00	1.00

The NRC rating is calculated as the average of the absorption coefficients measured at frequencies of 250Hz, 500Hz, 1000Hz and 2000Hz and round to the nearest 0.05. SAA rating is calculated as the average of the sound absorption coefficients of a material for the twelve one-third octave bands from 200Hz through 2500Hz and rounded off to the nearest 0.01.

### Acoustic Performance

Frequency (Hz)		125	250	500	1000	2000	4000
Estic 24mm (no air gap)	$\alpha_p$	0.05	0.25	0.55	0.90	1.00	1.00
Estic 24mm (50mm air gap)	$\alpha_p$	0.15	0.35	0.75	1.00	1.00	1.00
Estic 24mm (50mm insulation)	$\alpha_p$	0.40	0.90	1.00	1.00	1.00	1.00



- Estic 24mm (no air gap)
- Estic 24mm (50mm air gap)
- Estic 24mm (50mm insulation)

The table represents the practical sound absorption coefficient ( $\alpha_p$ ) in accordance with ISO 11654. The graph represents the sound absorption coefficients ( $\alpha_s$ ) in the third octave band center frequencies in accordance with ISO 354. Measurement used Pink Noise as excitation signal in a reverberant room.



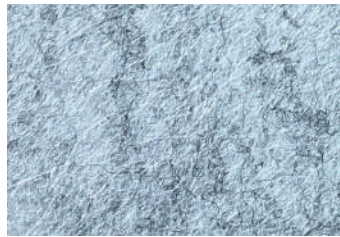
# Colour Collection



## Standard Selection



T01 WHITE



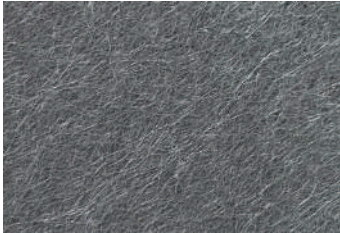
T03 SILVER GREY



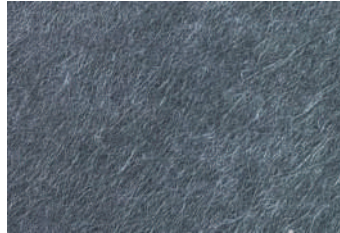
T18 SESAME BLACK



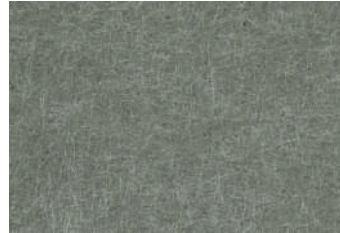
T20 JET BLACK



YH639 SPESH GREY



T04 MOON GREY



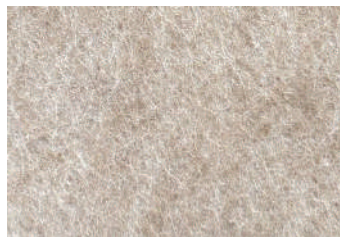
YH655 OAT



CBY97 BAMBOO GREEN



T25 BEIGE



KP66 AGARWOOD



T27 LIGHT BROWN



YH658 APRICOT

Actual colour may vary, please request for updated colour samples of **estic** panels . Contact our design team for custom applications or visit our website at [www.alfadb.net](http://www.alfadb.net).







# Ceiling Features

Designed for High-Performance Applications





**Customizable**  
Acoustic Ceiling Designs

# Get in touch with us



**YOUTUBE**

ALFA dB



**FACEBOOK**

[www.facebook.com/alfadb.net](http://www.facebook.com/alfadb.net)



**INSTAGRAM**

[alfadb.my](https://www.instagram.com/alfadb.my)

## Website

[www.alfadb.net](http://www.alfadb.net)

## Email address

[info@alfadb.net](mailto:info@alfadb.net)

## Contact number

+60 13 329 9960

+60 10 385 9960

+603 5103 2730 (Headquarter)

### Alfa Soundscape & Design Sdn Bhd Main Office

No 32A-1, Jalan Putra Mahkota 7/4B, Putra Heights,  
47650, Subang Jaya Selangor, Malaysia

### Alfa Soundscape Malaysia Design Studio

No 25-G, Jalan Putra Mahkota 7/4A, Putra Heights,  
47650, Subang Jaya Selangor, Malaysia

### Alfa Soundscape Sweden Sound Lab

Braxengatan 5, 222  
71, Lund Sweden

SCAN TO CONNECT!



SWEDEN • MALAYSIA • SINGAPORE • PHILIPPINES • VIETNAM • DUBAI